



elite systems

Crown
Commercial
Service
Supplier

Wyken Croft Primary School

SEND Modular Classroom with Breakout Room

 **Client:** Wyken Croft Primary


 **Sector:** Education (SEND)


 **Location:** West Midlands

The Brief


Wyken Croft Primary School required additional SEND teaching space to support pupils requiring specialist learning environments within the school. Elite Systems was appointed following a competitive tender process to deliver a modular classroom building through the Crown Commercial Service Framework.


The completed 8.4m x 11.2m building includes a classroom, breakout room, accessible WC facilities, and supporting spaces, creating a calm and practical learning environment tailored to SEND requirements. Elite Systems was commissioned to deliver a full turnkey package including surveys, groundworks, manufacture, installation, and final fit out.

 **Project:** SEND Modular Classroom with breakout room

 **Location:** Coventry, West Midlands

 **Project Cost:** £263,000

 **Timeline:** The building was successfully installed onsite in just 6 weeks.

 **Key Features:** Bespoke SEND teaching environment with breakout room, full-height glazing, timber-clad exterior, accessible design, and full turnkey project delivery.

The Main Features

Outside

- ✓ **Plastic-Coated Steel & Timber Cladding**
Plastic-coated steel finishes combined with timber cladding create a modern appearance that integrates naturally with the existing school environment.
- ✓ **High-Performance Roofing System**
Insulated EPDM roofing system designed for long-term weather protection, durability, and low maintenance requirements.
- ✓ **Secure External Access**
Steel entrance and fire exit doors provide durability, security, and safeguarding support within the live school environment.
- ✓ **Level Access Pathways**
DDA-compliant pathways and external circulation routes provide safe and accessible movement around the building, while level access to all external doors supports ease of entry for all users.
- ✓ **Large Anthracite UPVC Windows**
Large anthracite UPVC windows, including full-height glazing, maximise natural light and help create a calm, bright learning environment.
- ✓ **External Landscaping Works**
New tarmac pathways, drainage works, grass reinstatement, and external groundworks completed as part of the turnkey package.



Inside

- ✓ **Dedicated SEND Classroom**
A bright and modern teaching environment designed to support focused SEND learning activities.
- ✓ **Breakout Room**
Separate breakout space providing a quieter environment for smaller group sessions and individual support.
- ✓ **Acoustic Internal Treatments**
Acoustic ceiling tiles and wall panelling help create a calmer internal environment for pupils and staff.
- ✓ **Accessible Washroom Facilities**
Accessible WC alongside additional unisex WC facilities incorporated into the layout.
- ✓ **Climate-Controlled Learning Spaces**
Daikin heating and cooling systems maintain comfortable teaching conditions throughout the year.
- ✓ **Integrated Data & Electrical Infrastructure**
LED lighting, emergency lighting, Wi-Fi provision, data points, and standalone fire and intruder alarm systems included throughout the building.



Challenges

The project presented several challenges throughout the design, groundwork, and installation phases, requiring careful coordination to maintain programme, safety, and operational continuity within the live school environment.



Ground Investigations and Existing Site Conditions

During excavation works, previously undiscovered concrete piers and buried rubble from earlier site developments were uncovered beneath the proposed building area. Additional investigations and revised groundwork approaches were required to prepare the site for installation.



Asbestos Management

Asbestos-containing materials were identified during the groundwork phase and safely managed in accordance with current regulations and statutory procedures. Elite Systems coordinated the required removal works while maintaining programme progress and site safety throughout the project.



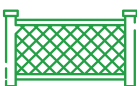
Live School Site Management

All works were completed while the school remained fully operational. Site activities, deliveries, and crane operations were carefully coordinated to minimise disruption to staff and pupils throughout the construction programme.



Site Access & Crane Installation

Restricted site access required careful planning throughout delivery and installation. Access was maintained through an existing gate onto the school field, while existing boundary trees were retained throughout the project. Modular sections were delivered by HGV and lifted into position by a 100-tonne crane from the adjacent car park area, requiring detailed coordination during installation.



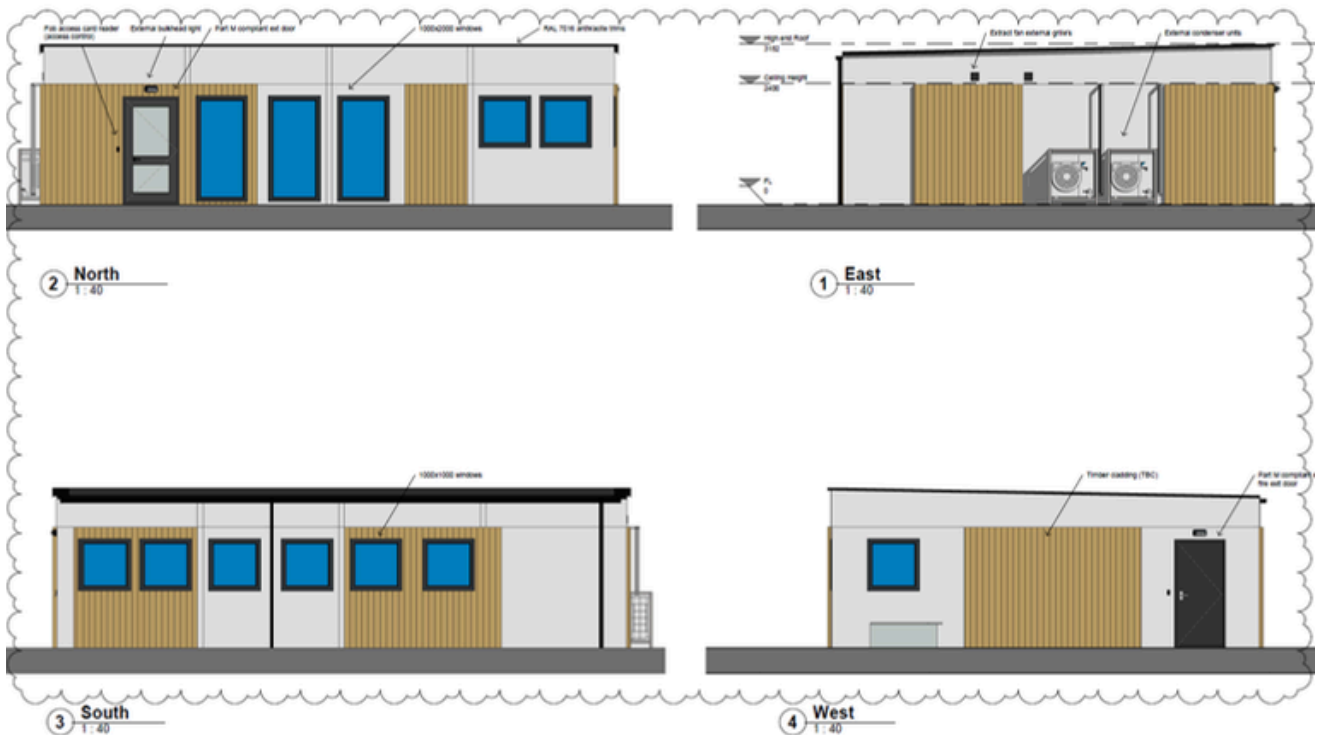
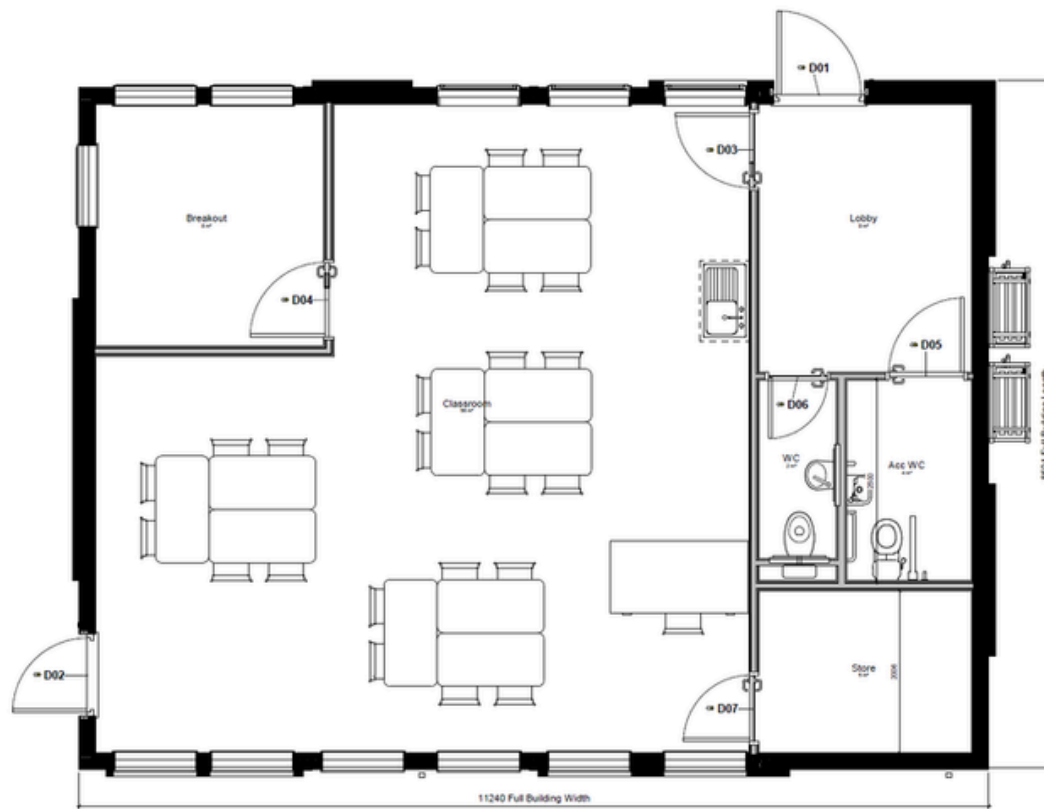
Safeguarding & Security Requirements

Maintaining a secure separation between construction activities and school operations was critical throughout the project. Elite Systems established a secure self-contained site compound with controlled access arrangements, while all personnel completed enhanced DBS checks prior to commencement.



Accessibility & External Levels

Groundworks and landscaping works required regrading of external areas to create compliant level-access routes around the building. New tarmac pathways, drainage infrastructure, and external circulation areas were completed to support accessibility and safeguarding requirements.



SEND Specific Design

The building was designed to support SEND learning requirements and provide a comfortable environment for pupils. Large full-length windows maximise natural light and create a calming outlook from the classroom spaces, while a dedicated breakout room supports smaller group activities and focused learning sessions. Acoustic wall and ceiling treatments help reduce noise levels and create a calmer internal environment. Accessibility and safeguarding were also incorporated throughout, including level access routes, accessible WC facilities, high-level door handles, and safe external circulation routes.



“

We are absolutely thrilled with our new building and it will make a real difference to the children of the school. The quality of the build is excellent and represents excellent value for money when comparing other permanent builds.

At the very start we were able to visit another school with an Elite building which gave us additional ideas for our building including the full-length windows which have made a stunning outlook and calming effect for our children.

With Elite being part of the Crown Commercial Service Framework we were able to achieve best value for the school but also made the procurement process much easier. The team on site were very hands on and kept the school fully informed with the project being completed slightly ahead of schedule.

Overall an excellent project for the school with all the stakeholders very pleased.

Claire Preston

School Business Manager, Wyken Croft Primary School

”

The Results

The completed modular expansion has given Wykencroft Primary School much-needed high-quality SEND teaching facility tailored to the school's operational and educational requirements.

Even with the unforeseen site conditions during the groundwork phase, Elite Systems managed to deliver this project ahead of its schedule, with the client praising both the quality of the finished building and the management of the works throughout.