



St Richard's Hospital

Temporary Decant Modular Mortuary Facility

 **Client:** St Richard's Hospital

 **Sector:** Healthcare


 **Location:** West Sussex

The Brief


As part of a wider redevelopment programme at St Richard's Hospital, Chichester, a temporary modular mortuary facility was required on a hire basis to maintain essential mortuary services while works to the existing mortuary building were planned.


Elite Systems was appointed by Morgan Sindall to deliver a purpose-built modular mortuary facility capable of meeting the operational, compliance and service requirements of a live healthcare environment.


The building was required to provide a fully functional mortuary solution while ensuring continuity of service for the Trust throughout the redevelopment programme.

 **Project:** Temporary Decant Modular Mortuary Facility

 **Location:** Chichester, West Sussex

 **Hire Cost:** Initial payment: £439,350.00
Then: £54,554 per month for the duration of the hire term.

 **Timeline:** Installed onsite in just 10 weeks.

 **Key Features:** Purpose-built modular mortuary facility, specialist refrigerated body storage system with capacity for up to 145 bodies, healthcare-compliant environment, and full turnkey project delivery.

The Main Features

Outside

- ✓ **Purpose-Built Modular Healthcare Facility**
Approximately 94m² (inc body storage 340m²) modular mortuary facility designed to support hospital operations during estate improvement works.
- ✓ **Insulated Modular Construction**
High-performance insulated floor, wall and roof construction designed to provide year-round comfort and energy efficiency.
- ✓ **Secure External Access**
Steel external doors and controlled access arrangements provide durability, security and operational control.
- ✓ **Part M Compliant Design**
Accessible entrances, circulation routes and facilities designed to support inclusive access requirements.
- ✓ **Delivered Within a Live Hospital Environment**
Installed while maintaining hospital operations, access routes and stakeholder requirements throughout the programme.



Inside

- ✓ **Dedicated Mortuary & Preparation Facilities**
Purpose-designed mortuary, preparation and support spaces developed to meet healthcare operational requirements.
- ✓ **High-Capacity Refrigerated Body Storage**
Specialist refrigerated body storage system incorporating chilled and frozen storage areas with capacity for up to 145 bodies.
- ✓ **Specialist Environmental Controls**
Mechanical systems designed to maintain controlled temperature, humidity and airflow conditions within key areas of the facility.
- ✓ **Negative Pressure Ventilation**
Dedicated ventilation systems designed to support specialist mortuary environments.
- ✓ **Healthcare-Grade Internal Finishes**
Durable healthcare-appropriate wall, ceiling and floor finishes designed for ease of maintenance and long-term performance.
- ✓ **Integrated Security & Communications Systems**
Access control, CCTV, nurse call, emergency lighting, data infrastructure and security systems installed throughout the facility.
- ✓ **Relatives & Staff Facilities**
Dedicated relatives room, staff room, shower facilities, accessible WC and welfare accommodation incorporated throughout the building.



Challenges

The project presented several challenges throughout the design, coordination and delivery phases. As the scope evolved, the project team worked closely with the principal contractor, consultants and hospital stakeholders to adapt the solution while maintaining operational continuity within a live healthcare environment.



Evolving Project Scope

What began as a temporary modular mortuary facility developed into a wider programme involving additional compliance works, estate improvements, demolition activities and future healthcare planning considerations, requiring continual design development throughout the project.



Compound & Access Reconfiguration

Temporary and permanent compounds, access routes and covered walkways were redesigned on several occasions to accommodate changing operational requirements and site constraints.



Live Hospital Environment

All works were coordinated within an operational NHS hospital, requiring careful planning to minimise disruption while maintaining safe access for staff, visitors and hospital services.



Maintaining Operational Continuity

Construction activities needed to be carefully phased to ensure the hospital could continue operating safely and effectively while improvement works progressed around the site.



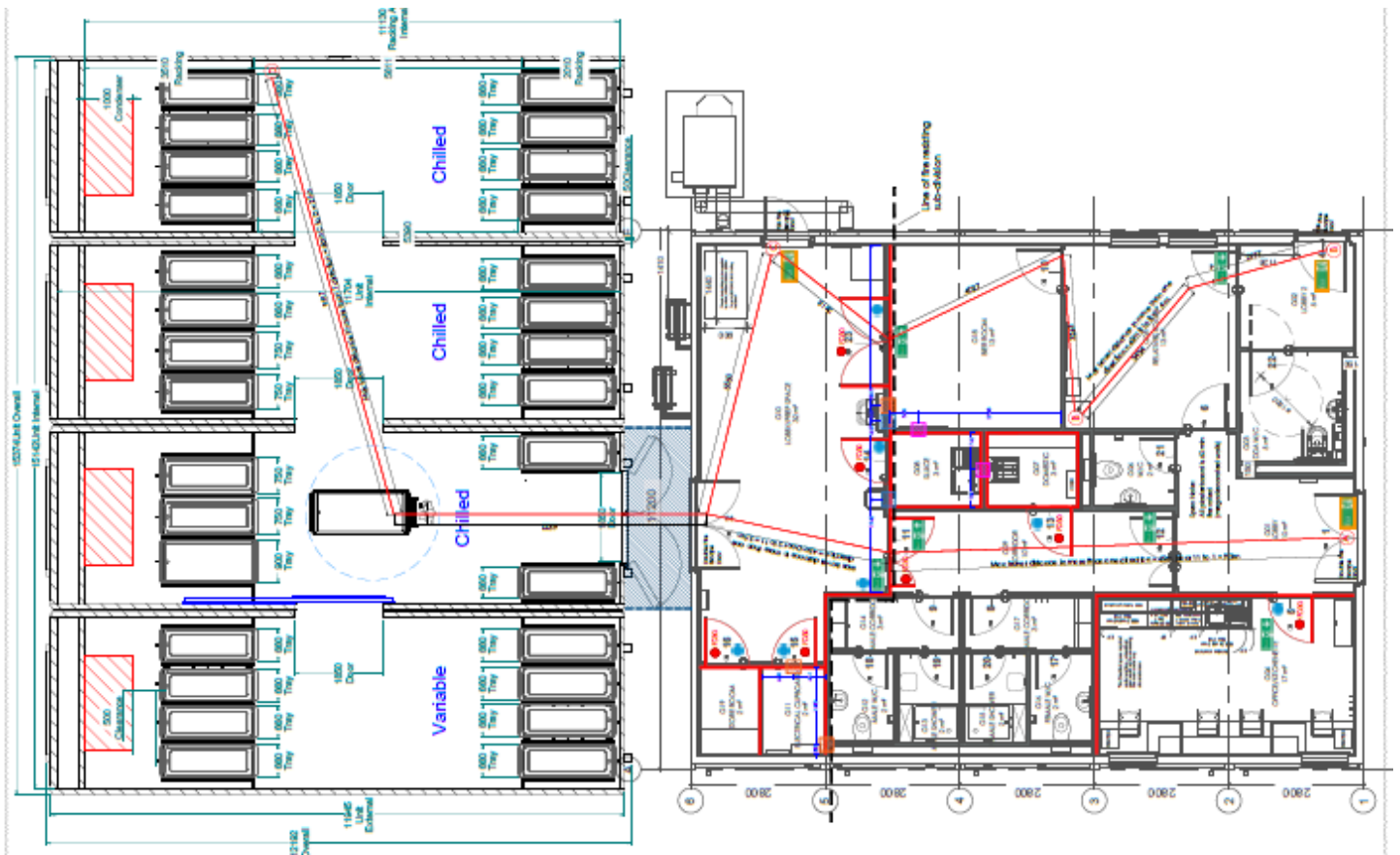
Stakeholder Coordination

The project involved multiple stakeholders, consultants and hospital departments, resulting in evolving requirements and ongoing design refinements throughout the delivery programme.



Flexible Design Development

The modular solution required ongoing adaptation to accommodate changing stakeholder requirements, operational needs and compliance considerations while maintaining programme progression.



The Solution

The completed modular mortuary facility successfully supported the hospital's operational requirements while accommodating the evolving needs of the wider redevelopment programme. Working closely with Morgan Sindall, consultants and hospital stakeholders, Elite Systems delivered approximately 94m² of modular mortuary accommodation together with a specialist refrigerated body storage facility (inc body storage 340m²), designed to support mortuary operations within a live hospital environment.

The facility also incorporated a range of mortuary, preparation and support spaces, including:

- Mortuary / Examination Room
- Bier Room
- Relatives Room
- Office / Technician Room
- Staff Room
- Accessible WC Facilities
- Male and Female WC and Shower Facilities
- Sluice Room
- Storage Areas
- Electrical Services Accommodation
- Reception and Circulation Space

Mechanical and electrical systems were designed to support the operational requirements of a healthcare environment, including specialist ventilation, temperature and humidity control, access control, CCTV, emergency lighting and security systems.



Project Outcome

Following occupation, the building met the Trust's requirements so successfully that the Trust chose to purchase and retain the facility as part of the hospital estate, removing the need to refurbish the original mortuary building.

The successful delivery of the project resulted in positive feedback from both the principal contractor and end client, with the principal contractor confirming they would be happy to work with Elite Systems again and commenting:

"The client was delighted with the outcome!"

Tom Bowcock, Managing Quantity Surveyor - Morgan Sindall