




elite systems

Crown  
Commercial  
Service  
Supplier

# Brighton & Hove Albion F.C.

Amex Stadium Gatehouse

 Client: ECE Architecture


 Sector: Education

 Location: Brighton and Hove, Brighton


## The Brief


Elite Systems received an incoming enquiry from ECE Architecture, who were seeking a high-quality gatehouse solution for the Amex Stadium — home of Brighton & Hove Albion FC. The client required a modular building that could be craned into position quickly, minimising disruption on-site. Speed, precision, and design flexibility were key.

The gatehouse features a distinctive exterior design, including a bull nose fascia and cladding in the club's colours. This tailored solution was made possible through our bespoke design approach, enabling us to deliver a structure that met the client's exact requirements both functionally and architecturally.

 **Project:** Stadium Gatehouse

 **Location:** Brighton and Hove, Brighton

 **Timeline:** Completed and installed in just over two weeks, the gatehouse was delivered on a fast-track programme to ensure it was fully operational ahead of the club's next home fixture — with zero disruption to stadium operations.

 **Key Features:** Cladding designed to match the club's colours, PV panels installed on the roof for sustainable energy generation and a bull nose fascia for a sleek, modern finish.



# The Main Features

## Outside

- ✓ **General superstructure-** The superstructure was a single storey hybrid timber/steel frame, with a 25-year structural warranty.
- ✓ **Illuminated Club Logo-** A striking Brighton & Hove Albion FC neon light logo mounted on the exterior façade serves as a bold visual statement and reinforces the club's branding, especially effective during evening matches and events.
- ✓ **Club-Coloured Mesh Panels-** Blue and white perforated aluminium mesh panels wrap the building's exterior, symbolising the club's colours and integrating the structure seamlessly into the surrounding stadium environment.
- ✓ **Durable Entry Points-** Blue aluminium external doors and double glazed windows were selected for their strength, security, and colour alignment with the club's branding.
- ✓ **Bespoke Roof Profile-** The roofline is finished with a blue aluminium bullnose fascia, offering a clean, curved aesthetic that adds architectural flair and conceals rainwater goods for a seamless look.



## Inside

- ✓ **Control Room-** A secure, climate-controlled hub for managing access and surveillance. The room is fitted with fob-access entry to ensure restricted access for authorised personnel only.
- ✓ **Standard WC and Accessible WC-** Two separate toilet facilities, including a fully compliant accessible WC, designed in accordance with DDA standards to ensure ease of use for all visitors and staff.
- ✓ **Kitchenette Area-** A compact, well-equipped kitchenette featuring modern white kitchen units paired with a hygienic and durable Whiterock splashback. This provides staff with a clean, low-maintenance space for refreshments.
- ✓ **Safety Systems-** The building is fitted with a smoke detector and other essential fire safety provisions to meet current building regulations and ensure occupant safety.
- ✓ **Climate Control-** Heating and ventilation systems have been integrated to provide year-round comfort for staff working inside the building.



# Challenges

The project presented numerous challenges, which we addressed with determination and creativity. Some of the key obstacles included:



## Live Environment

The building was located at the entrance to the main car park of the busy stadium. To mitigate disruption and maintain safety, we implemented a strict “no-work” policy on match days. This required close collaboration with the stadium’s operations team to secure the full event calendar in advance and build a flexible programme around it. Additionally, we introduced robust communication procedures, including weekly coordination meetings and real-time updates with stadium staff, allowing us to react quickly to any changes in the event schedule. Clear signage, fencing, and traffic marshals were also deployed to manage boundaries and ensure segregation between the construction zone and the public during all working hours.



## Complex Design

The building design featured a bespoke bullnose fascia, designed to create a smooth and curved finish. The bullnose detail required precise curvature, alignment, and support to achieve the desired aesthetic while maintaining weatherproofing and structural integrity. Our design team worked closely with the architect and structural engineers from the early stages, using 3D modelling software to visualise the fascia and address potential clashes or tolerance issues before manufacture. The fascia itself was fabricated off-site in sections using pre-curved aluminium, which reduced on-site cutting and minimised the risk of misalignment. During installation, our site team employed custom-made templates and jigs to guide the positioning and maintain a consistent radius along all elevations.



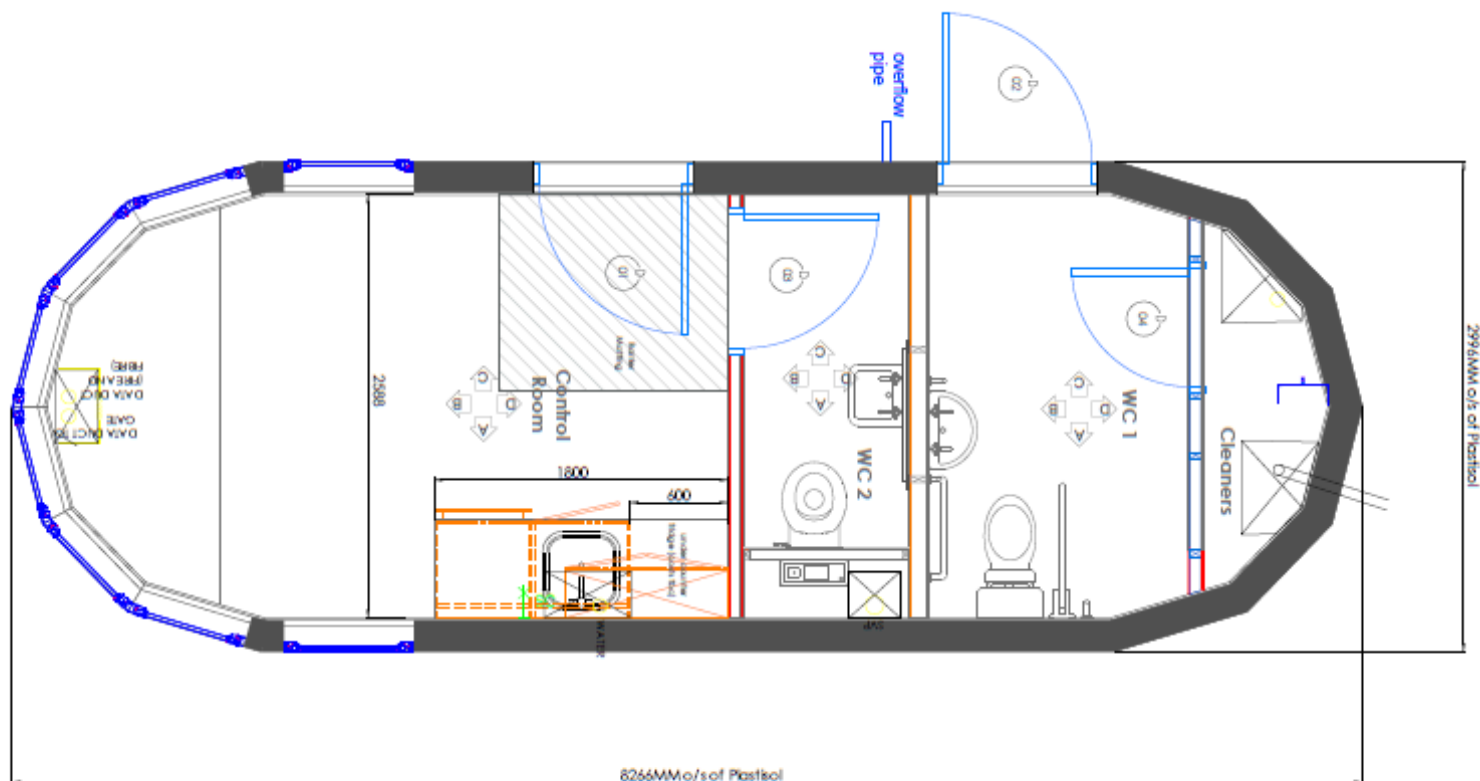
## Brand-Aligned Detailing

The gatehouse needed to visually align with Brighton & Hove Albion FC’s brand identity. This included incorporating the club’s distinctive blue and white colour scheme into the fascia elements, as well as installing bespoke metal mesh panelling to match the surrounding stadium architecture. To ensure an exact colour match, we worked closely with the club’s design team and our material suppliers to source aluminium fascia panels in a powder-coated finish that aligned with the club’s official branding. UV resistance and long-term durability were also considered in the final coating selection, to ensure the finish would retain its vibrancy over time. We sourced a durable perforated aluminium mesh with a custom RAL colour finish, carefully coordinated with the fascia to provide a cohesive look.

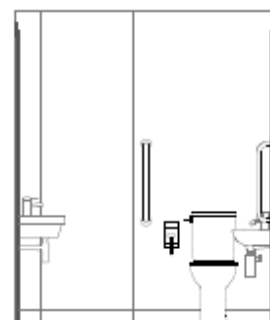


## Tight Programme

We were on a strict deadline to complete all works ahead of the upcoming football season. The timeline was non-negotiable due to operational and security requirements for match days. Delays would have disrupted the stadium’s ability to safely manage visitor access and parking—impacting both the club and its supporters. To meet the fixed deadline, we adopted a highly streamlined programme, leveraging the speed and precision of modular construction. The gatehouse was manufactured off-site in controlled conditions while enabling groundworks and service preparations to proceed in parallel on site. This allowed for efficient overlap of activities and reduced weather-related risk. The full installation and commissioning of the gatehouse was completed in just over two weeks—from delivery to handover.



Elevation - A  
CONTROL ROOM ELEVATIONS



Elevation - A  
WC 1 ELEVATIONS

## Bringing the Vision to Life

To support the delivery of a precise, functional, and visually aligned gatehouse, a full set of architectural drawings was produced — including general arrangement plans and external elevations. These detailed drawings were essential in capturing the client's design intent and ensuring accurate coordination during the manufacturing and installation phases.

The general arrangement plan outlines the internal layout, including the control room, kitchenette, accessible WCs, and service zones. External elevations highlight key architectural features such as the curved bullnose fascia, club-branded cladding, and high-spec aluminium windows and doors in Brighton & Hove Albion FC's official colours. These drawings were pivotal in aligning both structural and aesthetic requirements, ensuring seamless integration with the stadium environment.





# The Results

## Precision-Built, Club-Branded, Match-Day Ready

The completed modular gatehouse successfully met all functional, aesthetic, and operational requirements—delivered on time and within budget, just weeks before the start of the new football season. The building provides a secure, modern, and brand-aligned facility that enhances stadium operations while showcasing the flexibility and speed of modular construction.

### Key outcomes include:

- Seamless integration with the stadium's existing infrastructure
- A bold exterior finish reflecting Brighton & Hove Albion FC's identity
- A high-quality internal fit-out tailored to the needs of on-site staff
- Minimal disruption to day-to-day operations and full match-day functionality
- A programme delivered in just over two weeks on site

The project is a strong example of how modular construction can meet tight deadlines, complex design briefs, and high-profile stakeholder expectations—delivering lasting value with speed, precision, and style.