



elite systems

Crown  
Commercial  
Service  
Supplier

# Leverton Primary School

## Standalone Year 1 Classroom

 **Client:** Essex County Council


 **Sector:** Education


 **Location:** Waltham Abbey, Essex

### The Brief


Leverton Primary School required a new standalone Year 1 classroom to provide additional permanent teaching accommodation while complementing the existing school buildings. The new facility needed to create a bright, modern learning environment incorporating supporting welfare facilities and fully compliant accessible accommodation.

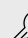
Elite Systems delivered a complete turnkey solution, including design, manufacture, groundworks, installation and commissioning. The building was carefully designed to match the appearance of the existing school through the use of buff brick-slip cladding while providing a durable, energy-efficient learning environment with minimal disruption during construction.

 **Project:** Standalone Year 1 Classroom

 **Location:** Waltham Abbey, Essex

 **Project Cost:** £288,394.01

 **Timeline:** 12 Weeks from Site Commencement to Completion

 **Key Features:** 65m<sup>2</sup> classroom, entrance lobby, accessible WC, store, plant room, brick-slip façade, air conditioning, PV-ready roof, energy-efficient LED lighting and external works.

# The Main Features

## Inside

- ✓ **Spacious Teaching Environment-** A bright 65m<sup>2</sup> classroom provides a flexible learning space designed to support modern Year 1 teaching.
- ✓ **Integrated Learning Facilities-** Interactive teaching walls, pinboards, classroom storage, utility sink and coat hooks create a practical learning environment.
- ✓ **Accessible Welfare Facilities-** The building incorporates an accessible WC, pupil WC, entrance lobby and dedicated store to support day-to-day school activities.
- ✓ **Comfortable Learning Environment-** LED lighting, acoustic ceiling tiles, air conditioning and mechanical ventilation ensure a comfortable internal environment throughout the year.
- ✓ **Durable Internal Finishes-** Heavy-duty contract carpet, anti-slip vinyl flooring and robust wall finishes provide a long-lasting, low-maintenance educational facility.



## Outside

- ✓ **Traditional School Appearance-** Buff brick-slip cladding was selected to complement the existing school buildings, creating a permanent appearance that blends seamlessly with the surrounding campus.
- ✓ **Secure Access-** Steel external doors, level access routes and new external pathways provide safe access for pupils, staff and visitors.
- ✓ **Energy-Efficient Design-** The building incorporates high-performance insulation, LED lighting, air conditioning and provision for photovoltaic panels to improve energy efficiency.
- ✓ **Complete External Works-** Groundworks included foundations, drainage, new tarmac footpaths, utility connections and landscaping to fully integrate the building into the school site.



# Challenges

The new classroom needed to integrate seamlessly with the existing school buildings rather than appear as a temporary modular structure. Buff brick-slip cladding, white windows and carefully selected architectural details created a permanent appearance that complements the surrounding campus.



## Working Within an Operational School

Construction took place while the school remained fully operational. Careful planning, controlled deliveries and secure site segregation ensured pupils, staff and visitors could continue their daily activities safely with minimal disruption.



## Delivering a Complete Turnkey Solution

Elite Systems managed every stage of the project, including design, planning, Building Regulations approval, manufacture, groundworks, utility connections, installation and commissioning. This single-source approach ensured programme certainty and simplified project management for the client.



## Creating a Modern Learning Environment

The classroom was designed to maximise natural daylight while providing a flexible teaching layout incorporating integrated storage, teaching walls, accessible facilities and modern building services to support contemporary education.



## Sustainability & Energy Performance

The building incorporates highly insulated construction, energy-efficient LED lighting, mechanical ventilation, air conditioning and provision for photovoltaic panels, reducing operational energy use while creating a comfortable learning environment.



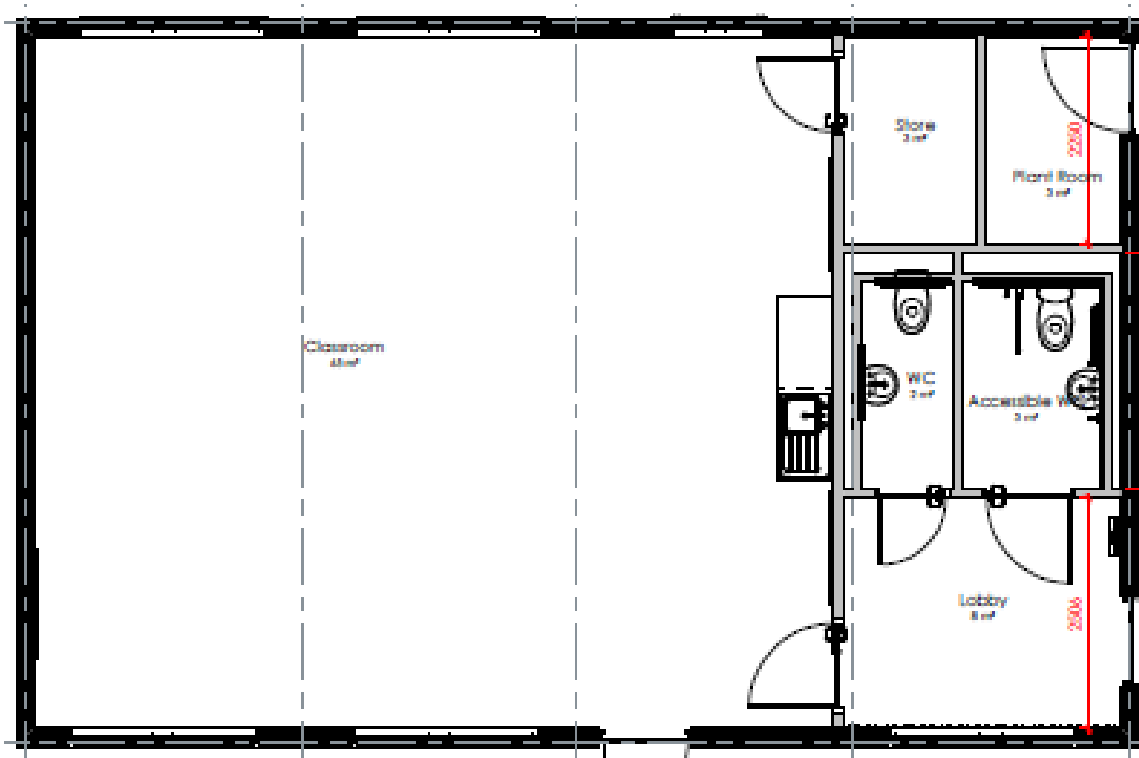
## Matching the Existing School

The new classroom needed to integrate seamlessly with the existing school buildings rather than appear as a temporary modular structure. Buff brick-slip cladding, white windows and carefully selected architectural details created a permanent appearance that complements the surrounding campus.



## Long-Term Durability

Robust materials including brick-slip cladding, steel doors, EPDM roofing and heavy-duty internal finishes were selected to minimise future maintenance and provide Leverton Primary School with a durable educational facility for many years to come.



## The Design



The building was designed to provide a bright, welcoming learning environment while complementing the appearance of the existing school. Careful attention was given to classroom layout, accessibility, natural daylight and durable materials, creating a permanent facility that supports both pupils and teaching staff.

### Designed Around Learning

- ✓ 65m<sup>2</sup> open-plan classroom
- ✓ Interactive teaching wall
- ✓ Accessible WC facilities
- ✓ Dedicated entrance lobby
- ✓ Classroom storage
- ✓ Utility sink
- ✓ Bright naturally lit learning space

### Built for Performance

- ✓ Buff brick-slip façade
- ✓ EPDM roofing system
- ✓ High-performance insulation
- ✓ Energy-efficient LED lighting
- ✓ Air conditioning & ventilation
- ✓ Low-maintenance construction



## The Results

The completed standalone classroom has provided Leverton Primary School with a high-quality permanent teaching facility that blends seamlessly with the existing campus while providing a bright, modern learning environment for Year 1 pupils.

Delivered as a complete turnkey project, the building combines durable construction, energy-efficient design and contemporary educational facilities within a traditional architectural appearance. The result is a low-maintenance, future-proof classroom that will continue to support teaching and learning for many years to come.

