




# Dene Barton County Hospital

## Hydrotherapy Pool Facility

 **Client:** Dene Barton County Hospital

 **Sector:** Healthcare


 **Location:** Taunton, Somerset


### The Brief

Somerset NHS Foundation Trust required a new modular hydrotherapy facility at Dene Barton County Hospital to expand rehabilitation services and provide a modern, accessible environment for patients of all ages and abilities.


The building needed to accommodate a specialist hydrotherapy pool, ceiling-mounted patient hoist, accessible changing facilities and dedicated plant space while being delivered within a live hospital environment with minimal disruption to daily operations.


Elite Systems delivered a complete turnkey solution, including design, manufacture, installation and commissioning. Using off-site modular construction, the project was completed quickly and efficiently, providing the Trust with a high-quality healthcare facility that meets modern accessibility and NHS standards.

 **Project:** Hydrotherapy Pool Facility

 **Location:** Taunton, Somerset

 **Project Cost:** £152,469.20

 **Timeline:** 1 month on site from delivery of modules

 **Key Features:** Hydrotherapy pool, ceiling-mounted patient hoist, accessible changing facilities, hygienic healthcare finishes, Siberian larch cladding, EPDM roof system, level-access entrances and specialist mechanical & electrical services.

# The Main Features

## Inside

- ✓ **Hydrotherapy Pool-** Purpose-designed therapeutic pool providing a safe and controlled environment for rehabilitation, physiotherapy and mobility treatments.
- ✓ **Ceiling-Mounted Patient Hoist-** Integrated tracking system enabling safe patient transfers directly into the pool, improving accessibility while reducing manual handling for clinical staff.
- ✓ **Accessible Changing Facilities-** Fully accessible changing rooms complete with shower facilities, non-slip flooring, grab rails and emergency assistance alarms.
- ✓ **Healthcare Grade Finishes-** Hygienic wall cladding, durable flooring and robust internal finishes designed to withstand intensive daily use while supporting infection control.
- ✓ **Efficient Building Services-** Mechanical ventilation, specialist pool plant equipment and energy-efficient services provide a comfortable environment for patients and staff throughout the year.



## Outside

- ✓ **Siberian Larch Cladding-** Natural timber cladding creates an attractive contemporary appearance while complementing the surrounding hospital buildings.
- ✓ **Low Maintenance Roof System-** A durable EPDM roofing system provides long-term weather protection with excellent thermal performance and minimal maintenance requirements.
- ✓ **Accessible Entrances-** Level thresholds and external pathways provide safe, inclusive access for patients, staff and visitors using wheelchairs or mobility equipment.
- ✓ **Integrated Drainage-** Surface water drainage was carefully coordinated with the existing hospital infrastructure to ensure reliable long-term performance.
- ✓ **Comfort & Building Services –** Air conditioning, mechanical ventilation, LED lighting and fire alarm system throughout.



# Challenges

Delivering a specialist healthcare facility within a live hospital environment presented several technical and logistical challenges, all of which were successfully overcome through careful planning and modular construction expertise.



## Live Hospital Environment

Construction was carried out within a fully operational hospital. Deliveries, crane operations and installation activities were carefully programmed to minimise disruption to patients, staff and emergency access routes while maintaining strict health and safety standards.



## Accessibility & Compliance

The facility was required to comply fully with Building Regulations Part M together with NHS healthcare guidance. Every element of the building was designed to provide safe, dignified and inclusive access for users with a wide range of mobility requirements.



## Specialist Equipment Integration

The hydrotherapy pool, ceiling-mounted hoist and specialist mechanical and electrical services required close coordination throughout the design and manufacturing process to ensure seamless installation and long-term reliability.



## Infection Control

Healthcare environments demand robust, hygienic materials that withstand frequent cleaning. Durable finishes, specialist wall cladding and easy-to-maintain surfaces were specified throughout to support infection prevention procedures.



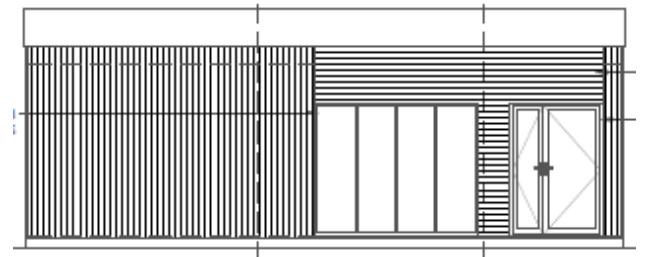
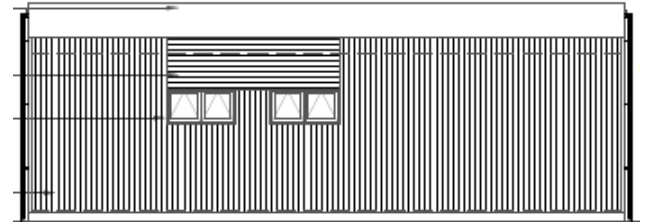
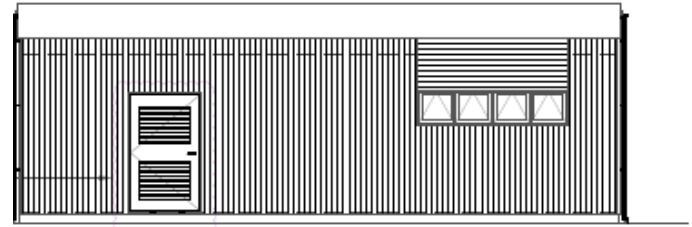
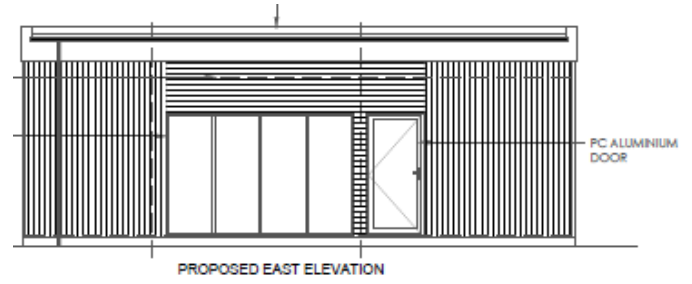
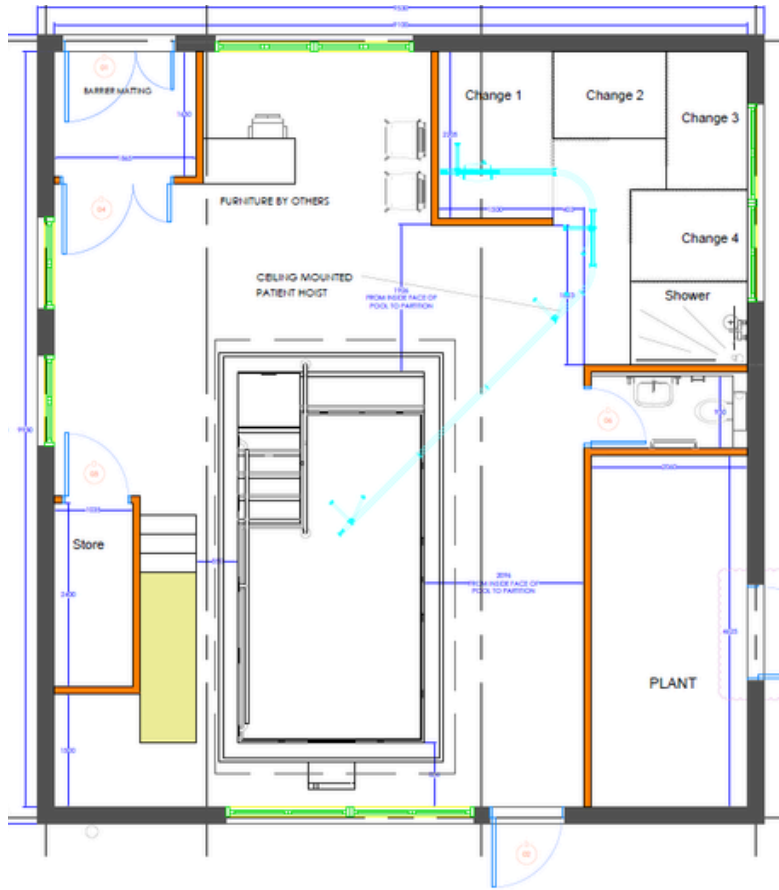
## Efficient Space Planning

Despite its relatively compact footprint, the building needed to accommodate a therapy pool, changing facilities, plant room, storage and circulation areas without compromising patient comfort or operational efficiency.



## Sensitive Hospital Design

The new building needed to complement the existing hospital estate while maintaining a modern appearance. Natural timber cladding and carefully considered architectural detailing created a welcoming environment that integrates sympathetically within its surroundings.



## The Solution



### Offsite Manufacture

The building was manufactured within Elite Systems' West Yorkshire factory, allowing quality-controlled construction to progress independently of site conditions and reducing programme risk.

### Patient-Centred Design

The completed building provides:

- ✓ Purpose-built hydrotherapy pool
- ✓ Ceiling-mounted patient hoist
- ✓ Accessible changing facilities
- ✓ Level-access entrances throughout
- ✓ Dedicated plant room
- ✓ Hygienic healthcare finishes
- ✓ Safe, efficient patient circulation

### Quality & Sustainability

Designed to deliver:

- ✓ NHS-compliant accessible design
- ✓ Durable Siberian Larch cladding
- ✓ High-performance insulated building fabric
- ✓ EPDM roofing system
- ✓ Energy-efficient mechanical & electrical services
- ✓ Factory-controlled off-site manufacture



“

"The feedback we've had from patients has been amazing so far – they love it! We even struggle getting them back out of the water. The building is used to help a wide range of people, from as young as one year old to the elderly and those with learning difficulties too."

– Sharron Kingston- Hydrotherapy Assistant  
Dene Barton County Hospital

”

## The Results

The completed hydrotherapy facility has enhanced rehabilitation services at Dene Barton County Hospital by providing a modern, fully accessible environment for patients and staff. Delivered using off-site modular construction, the project combined specialist healthcare design with rapid installation, creating a high-quality facility that will support patient rehabilitation for many years while minimising disruption to the live hospital environment.

