


Bardney Playgroup

Lincolnshire County Council

 **Client:** Lincolnshire County Council


 **Sector:** Education


 **Location:** Bardney, Lincolnshire

The Brief


Bardney Playgroup required a new standalone early years facility to replace its existing accommodation with a modern, permanent learning environment. The new building needed to provide bright, flexible teaching space together with dedicated welfare facilities, secure external play areas and fully compliant accessible accommodation for pupils, staff and visitors.

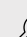
Elite Systems delivered a complete turnkey solution, including design, off-site manufacture, groundworks, installation and commissioning. The building was carefully designed to provide a contemporary architectural appearance through the use of Western Red Cedar cladding, a bespoke five-degree pitched roof and a feature entrance canopy, creating a durable, energy-efficient learning environment with minimal disruption during construction.

 **Project:** Standalone Early Years Facility

 **Location:** Bardney, Lincolnshire

 **Project Cost:** £329,384.33

 **Timeline:** 21 Weeks from Receipt of Order to Practical Completion

 **Key Features:** 188m² early years facility, 103m² playroom, office, baby sleep room, kitchen, utility room, accessible WC, children's WCs, baby changing facilities, Western Red Cedar cladding, bespoke pitched roof, feature entrance canopy, rooflights, wet-pour play area and complete external works.

The Main Features

Inside

- ✓ **Purpose-Built Early Years Environment-** The spacious open-plan playroom was designed specifically for early years education, providing a flexible environment for learning, play and group activities.
- ✓ **Dedicated Welfare Facilities-** The building incorporates children's WC facilities, an accessible WC, baby changing room, baby sleep room, kitchen, utility room and office to support daily operation.
- ✓ **Bright Internal Spaces-** Large windows and electrically operated rooflights maximise natural daylight throughout the building, creating an inviting learning environment.
- ✓ **Comfort & Air Quality-** Mechanical ventilation, energy-efficient heating and LED lighting provide a comfortable, well-ventilated environment suitable for year-round occupation.
- ✓ **Practical Everyday Operation-** Integrated storage, durable finishes, utility facilities and easy-to-maintain surfaces support the day-to-day operation of a busy nursery setting.



Outside

- ✓ **Distinctive Contemporary Design-** Western Red Cedar cladding, a bespoke pitched roof and contrasting aluminium windows create a permanent building that reflects modern educational architecture.
- ✓ **Feature Entrance Canopy-** A large steel-framed canopy provides a sheltered arrival space, improving access during all weather while creating an impressive focal point for the building.
- ✓ **Safe External Learning Environment-** New secure fencing, landscaped areas, pathways and wet-pour play surfacing provide safe outdoor spaces for children while improving the overall school environment.
- ✓ **Complete Turnkey Delivery-** Elite Systems delivered the full external package, including foundations, drainage, utility connections, tarmac surfacing, planting, landscaping and external infrastructure, ensuring the building was ready for immediate occupation.



Challenges

The project presented numerous challenges, which we addressed with determination and creativity. Some of the key obstacles included:



Architectural Design

The client required a modern early years facility that would complement the school while avoiding the appearance of a traditional modular building. Western Red Cedar cladding, a bespoke pitched roof and a feature entrance canopy were carefully integrated to create a permanent architectural statement.



External Infrastructure

The project extended beyond the modular building itself, incorporating new drainage, utility connections, fencing, landscaping, hardstanding, wet-pour play surfacing and external circulation routes that all required careful coordination.



Entrance Canopy

A large steel-framed entrance canopy formed a key architectural feature of the building. Its installation required separate foundations, precise structural alignment and careful sequencing alongside external works.



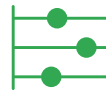
Early Years Layout

The building needed to accommodate a wide range of specialist facilities including a baby sleep room, kitchen, utility room, children's WCs, accessible WC, baby changing area and office, all within an efficient and functional layout.



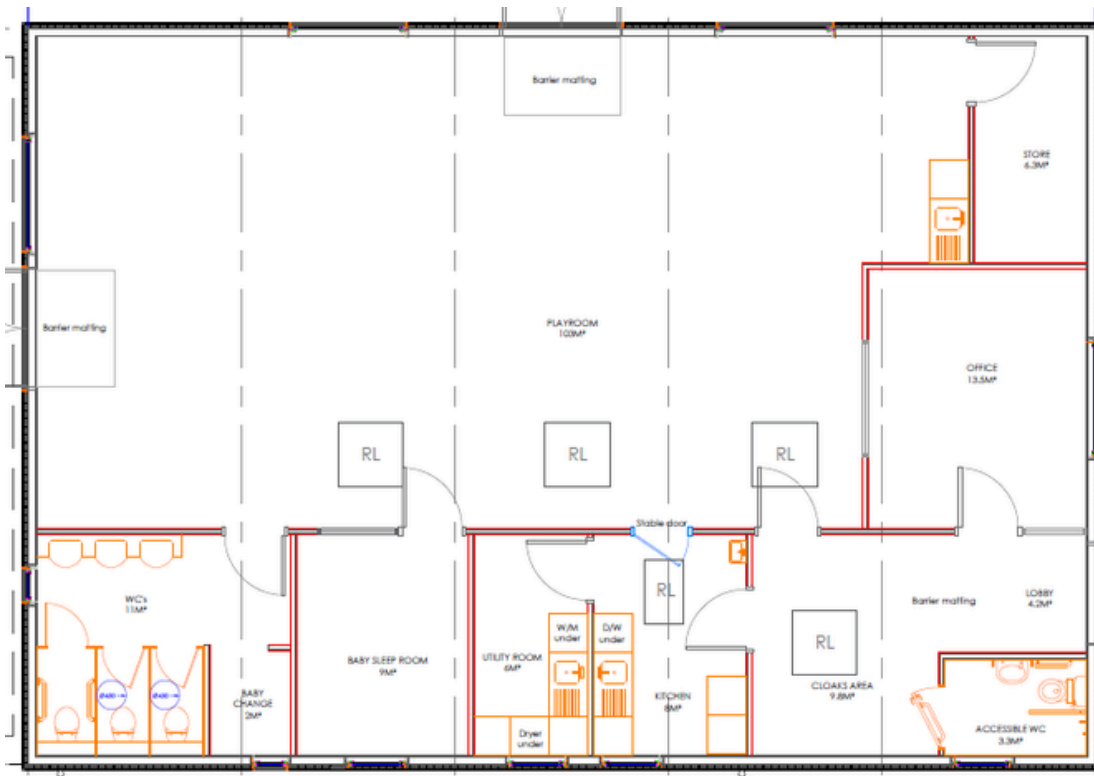
Natural Daylight

Extensive glazing and electrically operated rooflights were incorporated to maximise natural light throughout the playroom while maintaining thermal performance and occupant comfort.



Programme Coordination

Off-site manufacture progressed alongside groundworks and infrastructure works, allowing building installation, external works, utility connections and commissioning to be carefully coordinated and delivered efficiently.



The Design



The building was designed to create a bright, welcoming environment tailored specifically to early years education while delivering a distinctive architectural appearance. Every aspect of the design focused on creating an attractive permanent facility that combines functional learning spaces with durable, energy-efficient construction.

Designed Around Learning

- ✓ 103m² open-plan playroom
- ✓ Office
- ✓ Baby sleep room
- ✓ Children's WC facilities
- ✓ Baby changing facilities
- ✓ Cloakroom
- ✓ Bright naturally lit learning space

Built for Performance

- ✓ Western Red Cedar cladding
- ✓ Bespoke 5° pitched roof
- ✓ Steel entrance canopy
- ✓ Electrically operated rooflights
- ✓ High-performance insulation
- ✓ Energy-efficient LED lighting



The Results

The completed Bardney Playgroup has provided Lincolnshire County Council with a high-quality permanent early years facility that combines contemporary architecture with practical learning spaces. The spacious internal layout, dedicated welfare accommodation and secure external play environment create an inspiring setting that supports both children and teaching staff.

Delivered as a complete turnkey project, the building combines off-site construction, durable materials and energy-efficient design within a distinctive architectural form. The result is a low-maintenance, future-proof facility that will continue supporting early years education for many years to come.

PROJECT OUTCOMES

- ✓ Permanent early years facility
- ✓ Contemporary architectural design
- ✓ Complete turnkey delivery
- ✓ Secure external play environment
- ✓ Minimal disruption during delivery
- ✓ Low-maintenance construction

